

15 acres m/l

19200 Four Corners Road, Edgerton , KS

Property Status: Active for Sale

Accessibility: Off of Four Corners Road

Property Size: 15 acres m/l

Parcel #: 4F221504-1003

Taxes: \$2180.79 in 2005

Comments: Agent Bob Montgomery. Terms agreeable to Seller.

BOB MONTGOMERY
AGENT/BROKER

Montgomery and Company

1809 S. Ridgeview
Olathe, Kansas 66062

Phone: 913.782.6500

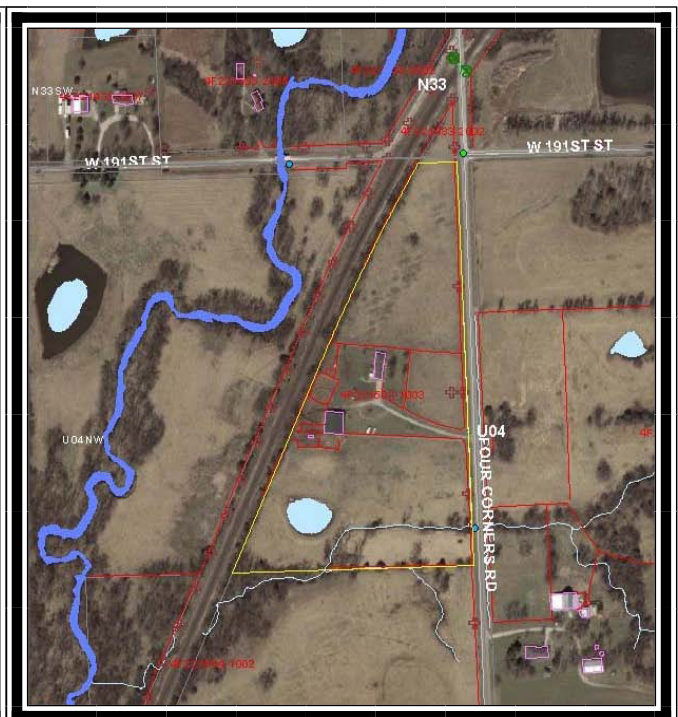
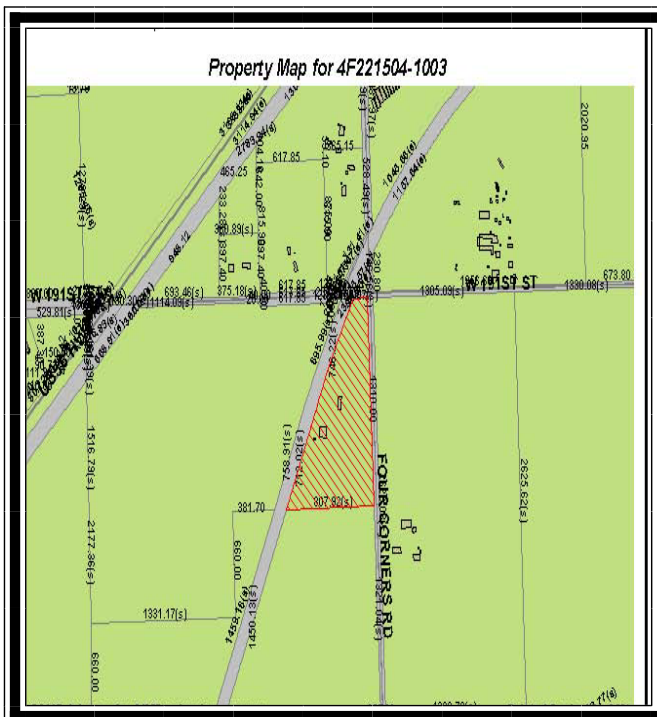
Fax: 913.782.8131

E-mail:

bob@montgomeryandcompany.com

Sale Price

\$640,000.00



Our clients become our business associates and friends.