

5 BR, 3BA Ranch, 8.3 Acres

26345 Jingo Road, Louisburg, KS

Property Instructions: Ranch home nestled in the trees with “park-like” setting. Beautifully landscaped. This home offers separate living quarters on lower level with interior & exterior access. Walk-out basement to patio. Deck on the east-side of home is great for entertaining. Property includes two ponds and a foot bridge over the creek. Birds, deer, & turkey for nature lovers. Taxes and s/f are per Miami County Appraiser’s Office & may be approximate. Listing Agent is Seller’s relative.

To view property: By appointment only! Do not let cat out. Call Listing Agent first. If no answer, leave message and call 2nd Listing Agent or Listing Office.

Driving Directions: From 247th & 69 Hwy– East to Old Metcalf, South to 263rd Street & West 1 mile to home on SE Corner of 263rd & Jingo Rd. From 68 Hwy & Old Metcalf– North on Old Metcalf to 263rd, West 1 mile to Home on SE Corner of 263rtd & Jingo Rd.

Comments: Agent Tim Golba. Terms agreeable to Seller.

TIM GOLBA
AGENT

Montgomery and Company

107 W. Cedar
Olathe, Kansas 66061

Office: 913.782.6500

Fax: 913.782.8131

E-mail:

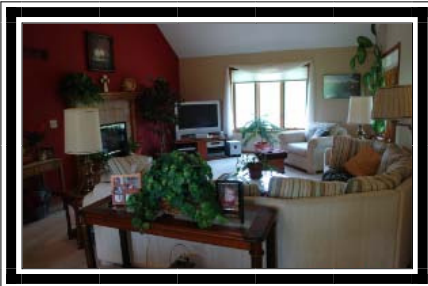
tim@montgomeryandcompany.com

Cell: (913) 579-8647

Sale Price

\$375,000

Taxes: 4012 in 2009



Our clients become our business associates and friends.

